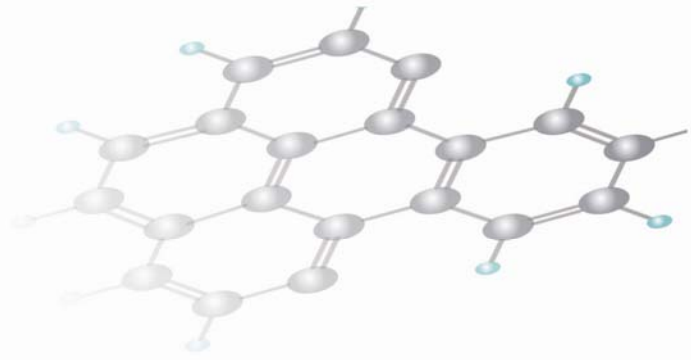


# pace 28



Precision  
Accuracy  
Convenience  
Economy ....  
.... at your fingertips

- ▣ 28 Direct Access Keys for User Convenience
- ▣ Dual cuvette system
- ▣ 33ul flow cell with min aspiration volume programmable from 350ul – 5000μl for economy
- ▣ User interactive software for easy operations
- ▣ Real time absorbance on the display
- ▣ In-built graphical thermal printer
- ▣ 2 Level Q.C with L-J graph to check accuracy

## pace 28

*a complete clinical chemistry analyzer*

**Ocean**  
medical technologies

*....because life is precious*

## Technical Specifications\*

### Test Programs:

128 test programs. Open system.

28 Direct Test Keys

Reagent blank memory

### Optical System:

6 filters for 340, 405, 505, 546, 578 and 630nm. Two free positions for further filter addition.

Photometric range from 0 – 2.5 A for 340 and 0 – 3.0 for others.

Bandwidth of 10nm ( $\pm$  2nm).

Silicone Photodiode detector.

Halogen Lamp 12V, 20W

### Measuring System:

Unique triple cuvette system : 33 $\mu$ l flow cell. Semi-micro cuvette. Micro cuvettes for coagulation

Peltier controlled temperature adjustable for 25, 30 and 37 °C with accuracy of  $\pm$  0.1 °C

Peristaltic pump with aspiration vol programmable from 250  $\mu$ l to 5000  $\mu$ l.

### Analytical Modes:

Capable of performing all Substrates, Enzymes, # Hormones, TDMs and Coagulation (PT, APTT).

Programming Methods : Absorbance, End Point with Standard, End Point with Factor, Two Point Kinetics (Fixed time), Multi-point kinetics, Multi standard upto 10 standards and Coagulation.

### Quality Control:

2 level Q.C

Storage of last 30 results for each of the direct access tests

L-J graph

### Display and Keyboard:

Back lit graphic LCD 240 x 64 pixels

High quality tactile Polydome keys

### Printer and Interface:

In-built graphic thermal printer with 384 dots/line, 57mm thermal paper

Test wise ON/OFF programmable.

RS-232 Port. \*\*ChemSync software available

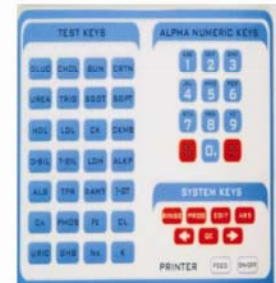
### Power/ Dimensions

220V, 50 Hz. Max power = 100VA

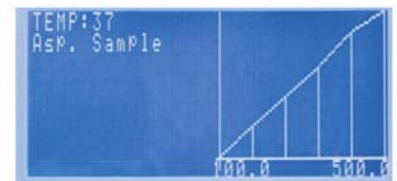
Ambient temperature 15 – 35°C

Maximum Relative Humidity 75%

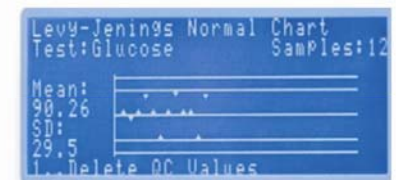
Dimensions: 160mm (H), 340mm (W), 400mm (D). Appx 10Kg



Direct Test Keys



Calibration Curve



Levy-Jenning Graph



Real Time Test Abs display

**Ocean**  
medical technologies

MD-1, Sah Vikas, 68-I.P. Extn; Delhi - 110092 - INDIA

Tel. : + 91 11 4307 1895 Fax : + 91 11 4307 1896

Web : www.oceanmed.in Email : info@oceanmed.in

\* Due to continuous development, specifications and shape are likely to change without prior notice.

\*\* Optional (shall be charged extra).

# Test tube ELISA method.